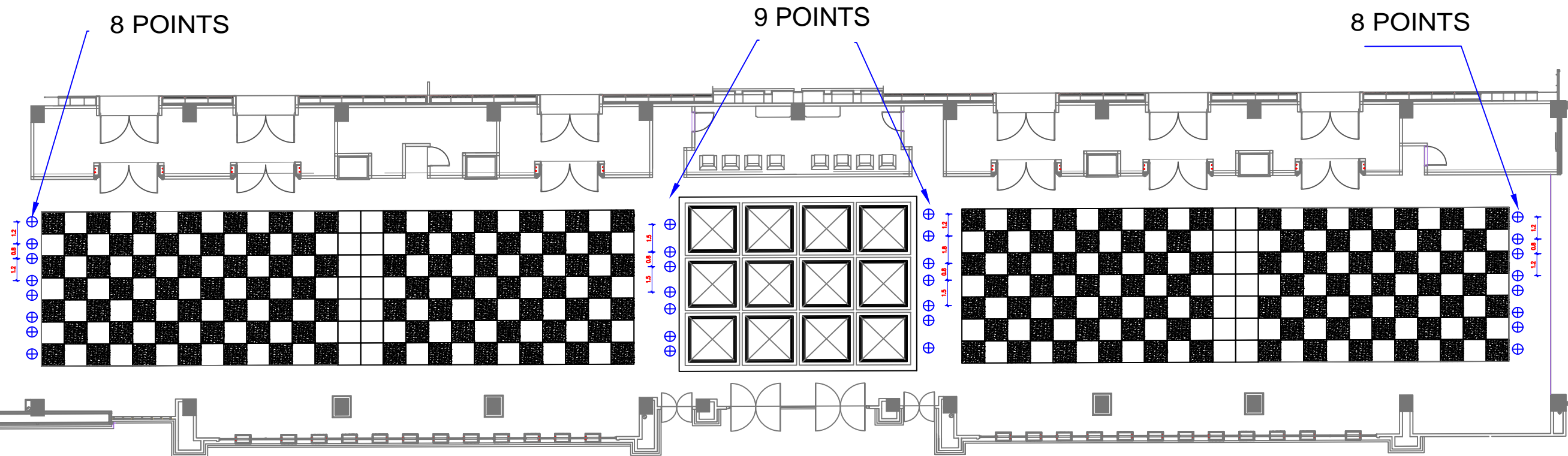


# BNDCC 1 EAST LOBBY

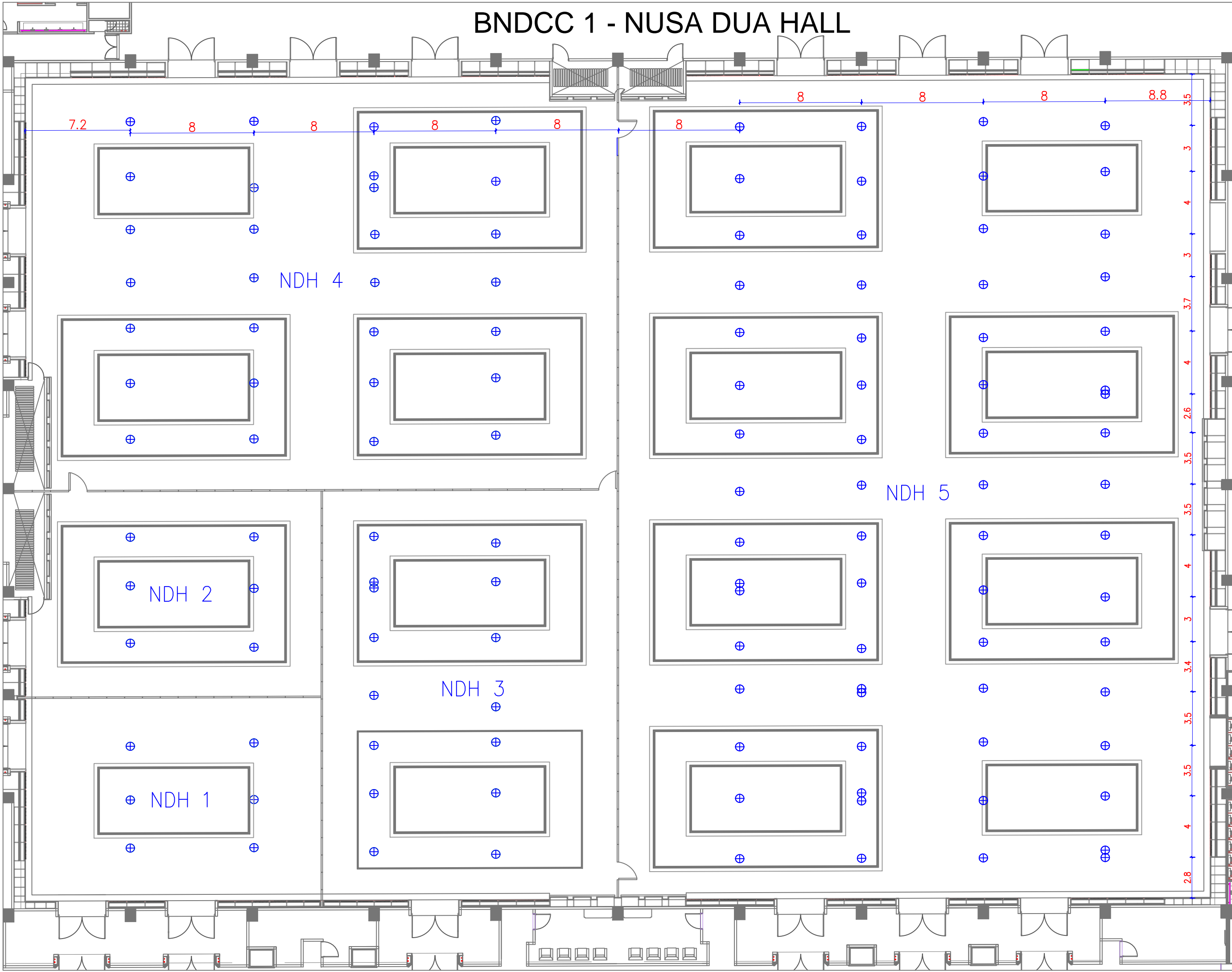


## NOTES

HANGING POINTS  
BNDCC 1  
EAST LOBBY

MAXIMUM LOAD  
3 kg/point

# BNDCC 1 - NUSA DUA HALL

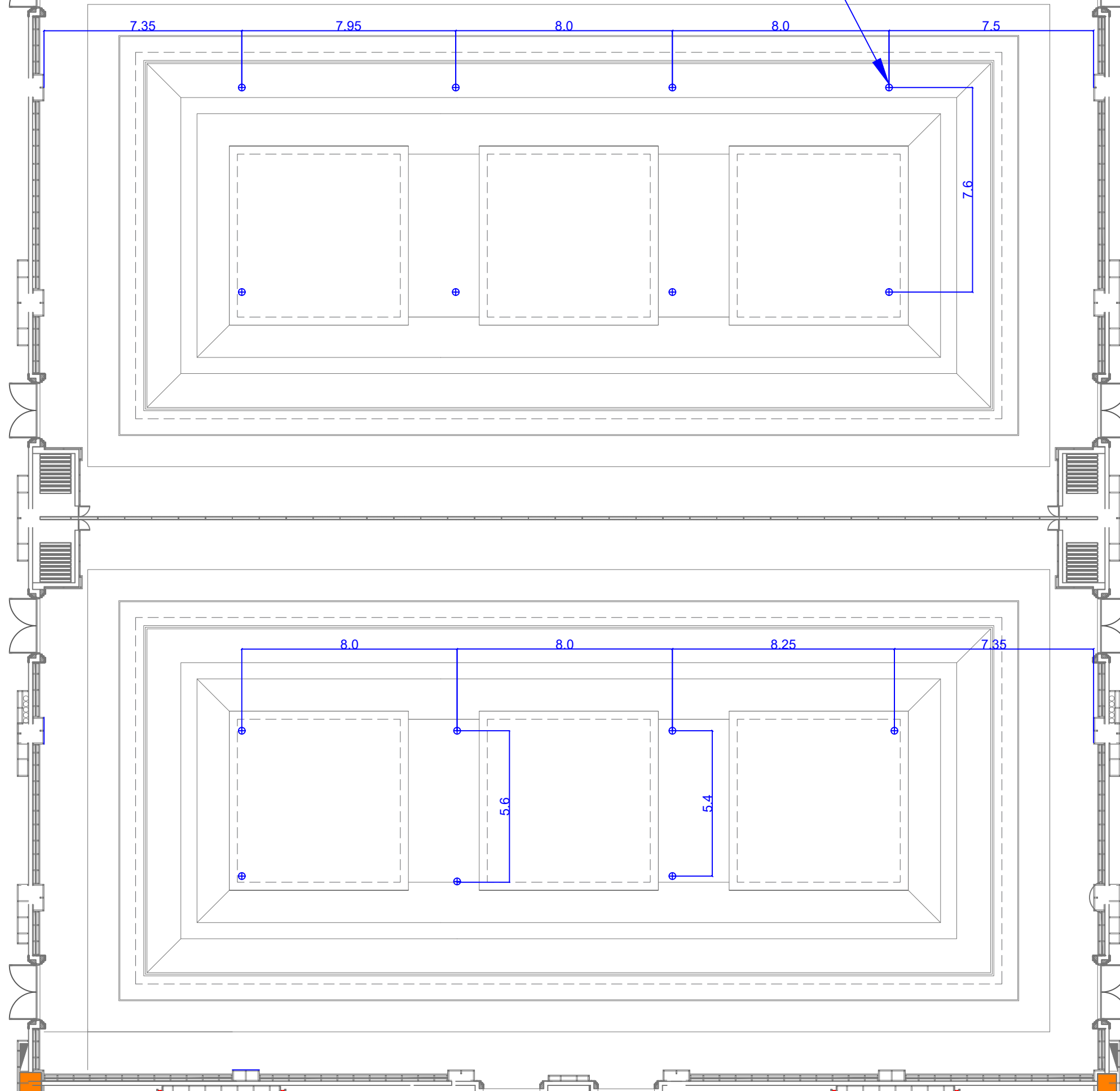


NOTES

HANGING POINTS  
BNDCC 1  
NUSA DUA HALL

MAXIMUM LOAD  
300 kg/point (jarak 8m)  
150 kg/point (jarak 3.5m)

# BNDCC 1 SINGARAJA HALL

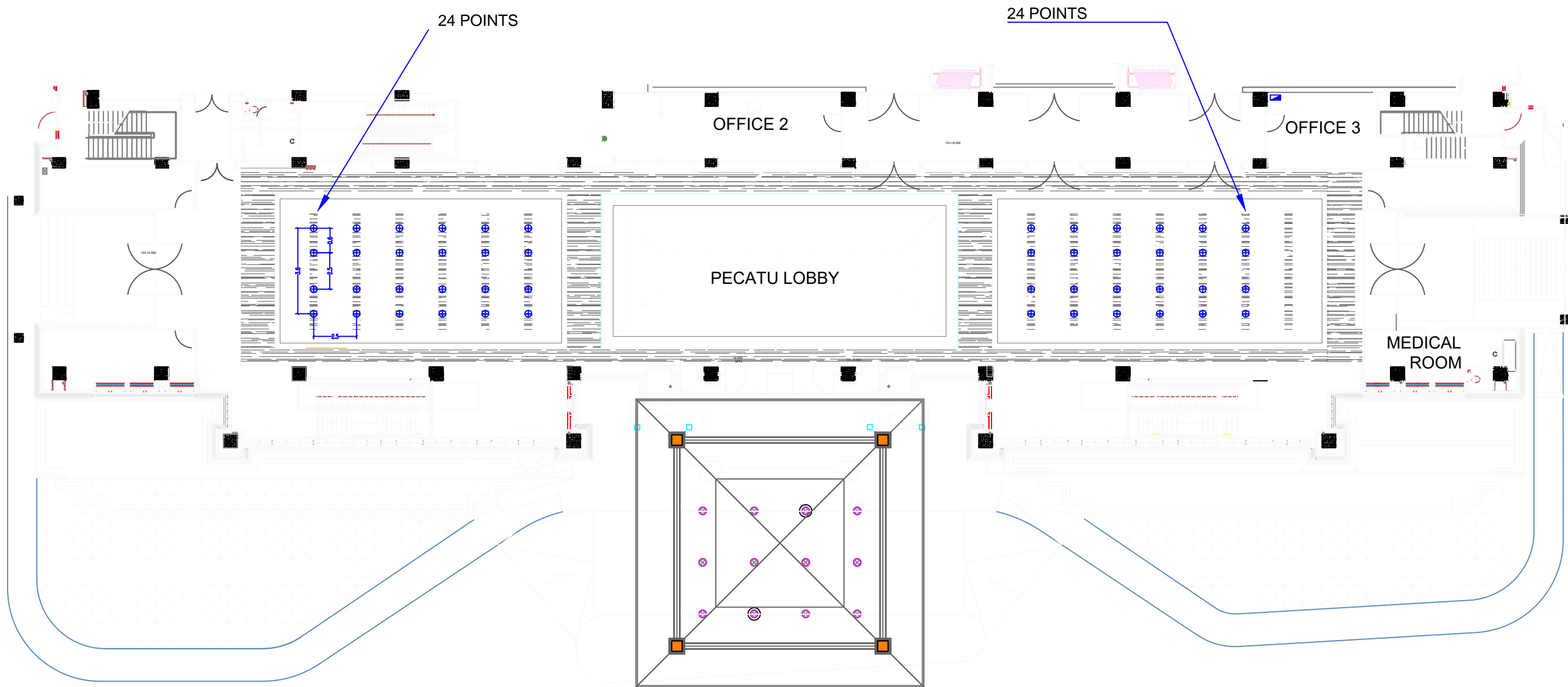


## NOTES

HANGING POINTS  
BNDCC 1  
SINGARAJA HALL

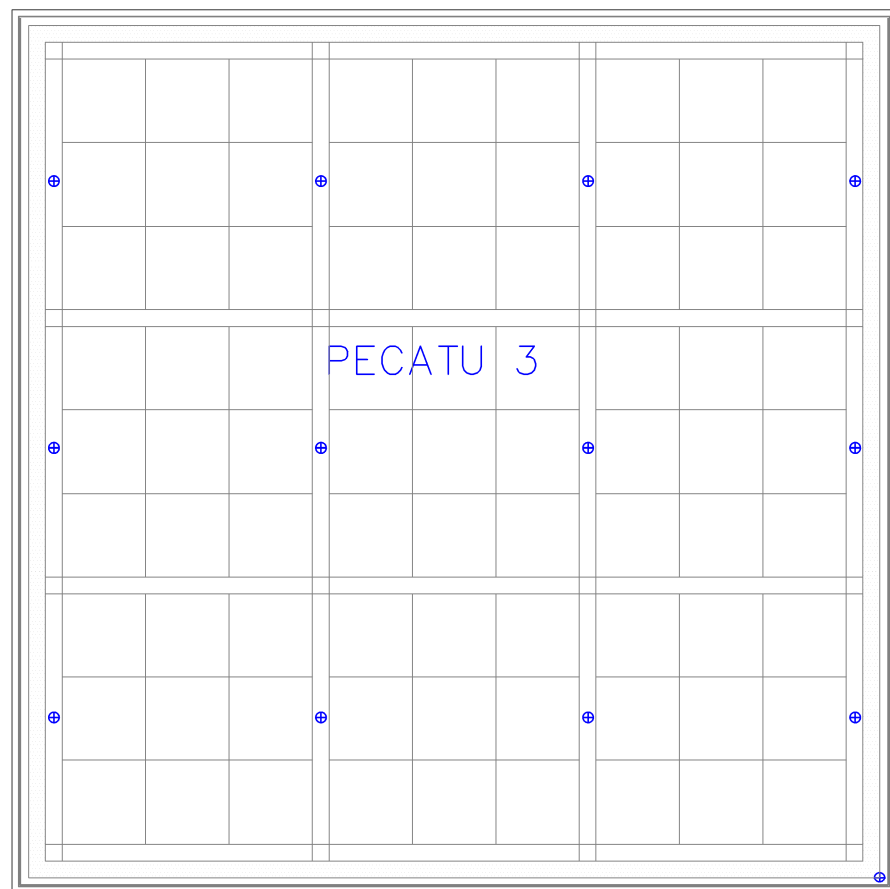
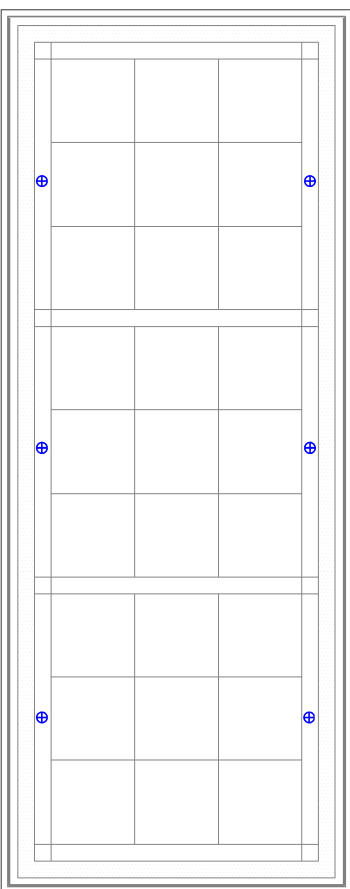
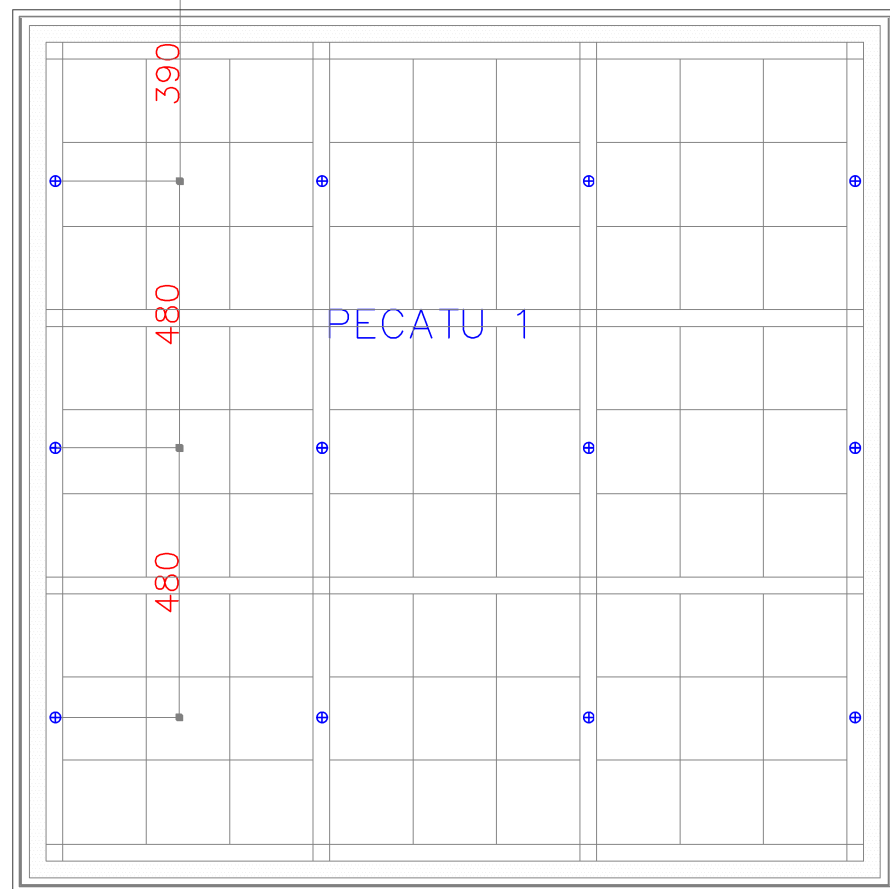
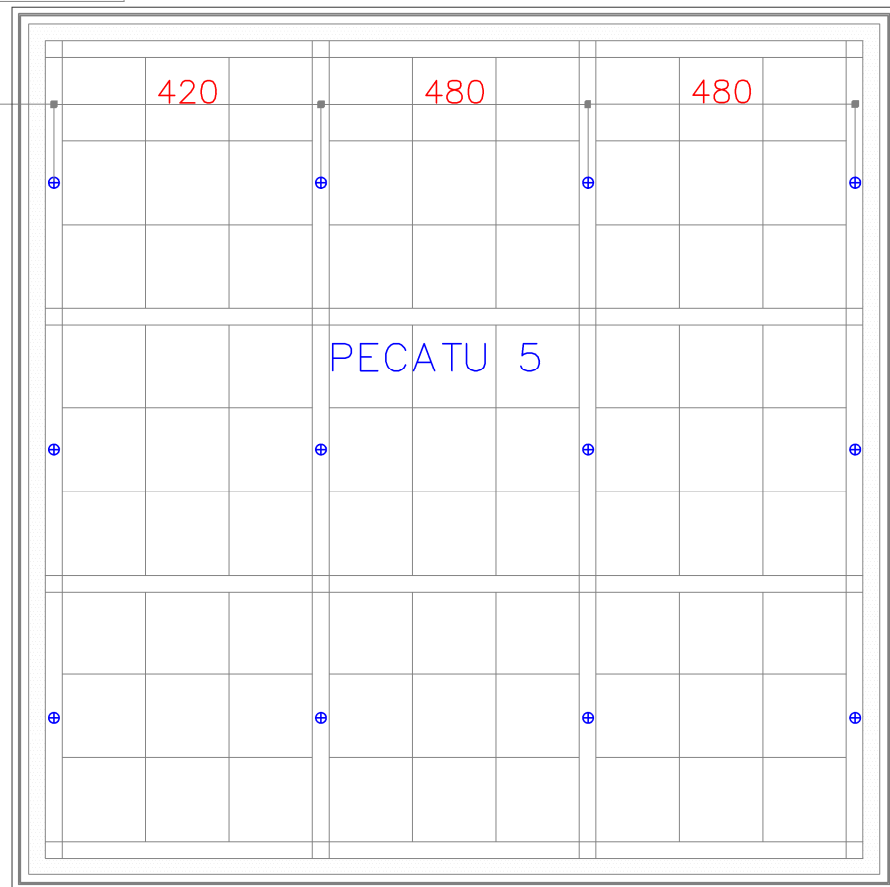
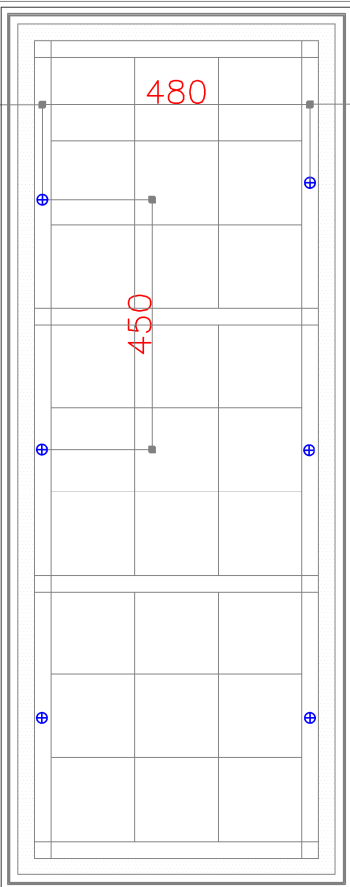
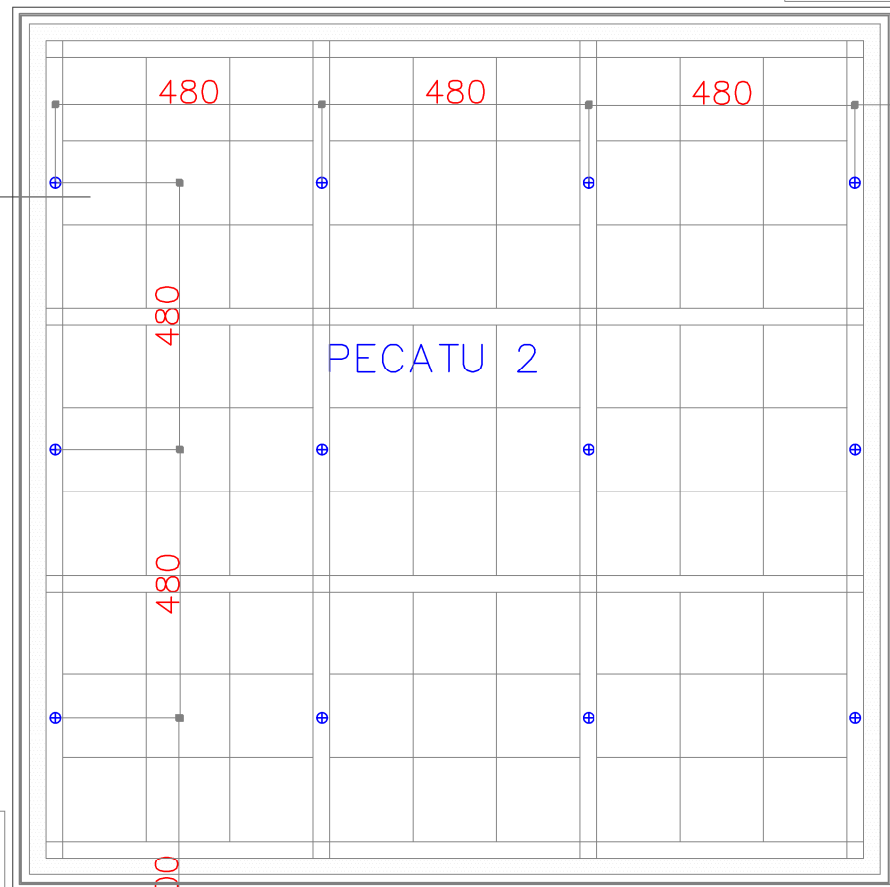
MAXIMUM LOAD  
200 kg/point

## BNDCC 2 PECATU LOBBY



NOTES
HANGING POINTS BNDCC 2 PECATU LOBBY
MAXIMUM LOAD 3 kg/point

# BNDCC 2 - PECATU HALL



**NOTES**

HANGING POINTS  
BNDCC 2  
PECATU HALL

MAX LOAD  
250 KG/POINT